

ART BASEL MIAMI BEACH

December 6 - 9, 2018, Booth C6



Max Ernst
Les Peupliers
1939

Elegantly dazzling with swirling colour application

Galerie Thomas presents „Les Peupliers“ by Max Ernst among other masterpieces

Miami/Munich, November 26, 2018

Max Ernst created his painting “Les Peupliers” in his love nest in Southern France. It was the last summer before the outbreak of the Second World War, his last and only summer in crazy, intimate togetherness with his lover Leonora Carrington. Galerie Thomas is pleased to present this Surrealist work from one of the most important stages in Max Ernst’s creativity and life at this year’s Art Basel Miami Beach.

The last weeks before his flight to the USA

Max Ernst, the German artist and leading proponent of Surrealism, had fled from Paris with Leonora Carrington to the small village of Saint-Martin d’Ardèche in order to escape his quarrelsome second wife and the disputes with André Breton, who was politically tending towards Stalinism. Here, they purchased a farmhouse, which they transformed into a “Gesamtkunstwerk” with sculptures and painting, and antagonized the villagers with their nudist escapades. In Saint-Martin, Max Ernst created “Les Peupliers,” a work that ranks among a whole group of paintings showing similar columnar structures and forms created by decalcomania.

GALERIE THOMAS

Expressionism & Classic Modern

Tuerkenstrasse 16 · 80333 Munich · Germany · Phone +49-89-29 000 80
Fax +49-89-29 000 888 · info@galerie-thomas.de · www.galerie-thomas.de

THOMAS PRESS RELEASE

Only few weeks later in this dramatic summer of 1939, Max Ernst was interned in the notorious camp Les Milles. He escaped twice and finally fled to the USA with the help of no one else than Peggy Guggenheim. There was one more short meeting with his lover Leonora in Lisbon, but their plans to escape together were dashed. The name of Max Ernsts third wife is Peggy Guggenheim, although she wasn't the last woman Max Ernst married.

Just an impression of two poplars

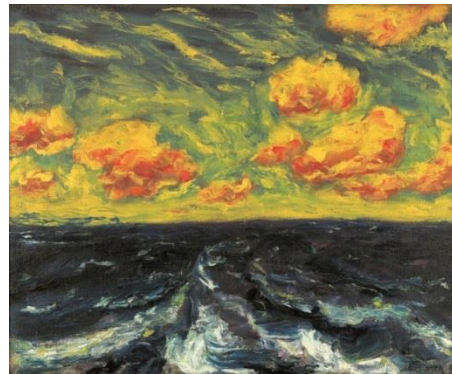
The perception of merely only a landscape painting when looking at "Les Peupliers" is soon shattered and overturned by the bizarre, strange and confusing forms in which the paint winds, curls and forms signs and symbols. Nowhere does the eye succeed in focussing on a familiar shape: profiles and faces, zoomorphic figures and cloud-like formations materialise, only to disappear again. "Everybody knows Max Ernst for Grattage and Frottage", says Silke Thomas, "but this elegantly dazzling surface effect he achieves through the technique of decalcomania, a transfer process, in which the paint is manipulated in such a way that the streaks, bubbles and curves that are typical of Ernst's paintings of this period are formed on the surface in an unplanned manner." And these works are paradigmatic for Surrealism, seducing the viewer at any moment to identify figures and forms that have never been deliberately represented.

Other masterpieces by Emil Nolde, Alexander Calder or Oskar Schlemmer

Galerie Thomas is proud to announce in addition: masterpieces by German expressionist Emil Nolde, American artist of Classic Modernism Alexander Calder, German Bauhaus teacher Oskar Schlemmer and others.



Alexander Calder
Untitled
1966



Emil Nolde
Autumn Sea XI
1910

About Galerie Thomas

Founded in 1964, Galerie Thomas has become one of the leading galleries by masterpieces of German Expressionism, Classic Modernism, Post-War Art and Contemporary Art. The gallery is located in the Munich art district and has been participating for many years at the following international art fairs: Art Basel, Art Basel Miami Beach, The Armory Show New York, TEFAF Maastricht, Art Cologne and recently Art Basel Hong Kong. Together with Silke and Raimund Thomas, Galerie Thomas is managed by the directors Heike Grossmann and Joerg Paal.

For further information as well as high resolution images please contact Caroline Neider at +49 89 29 000 863 / c.neider@galerie-thomas.de

© Calder Foundation, New York / Artists Rights Society (ARS), New York 2018

GALERIE THOMAS

© VG Bild-Kunst, Bonn 2018

© Nolde-Stiftung Seebüll 2018

© Galerie Thomas, 2018

Expressionism & Classic Modern